

SG_H&S_Report_Visuals_V4

[View in Power BI](#) ↗

Last data refresh:
28/03/2024 10:26:45 UTC

Downloaded at:
28/03/2024 14:36:55 UTC

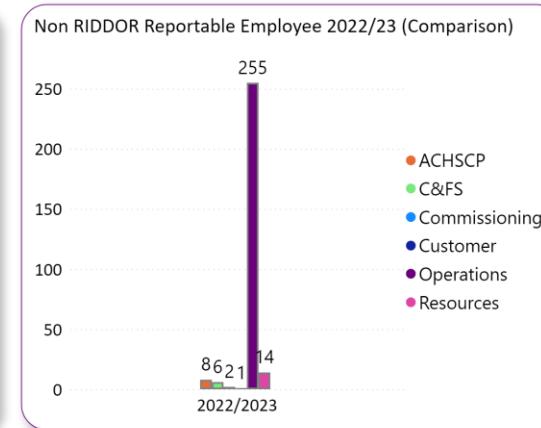
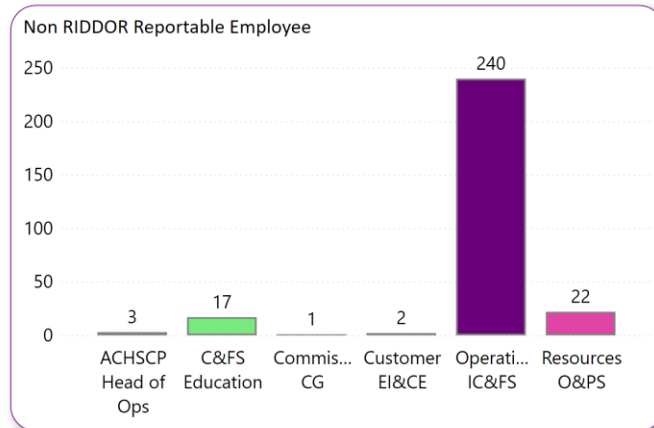
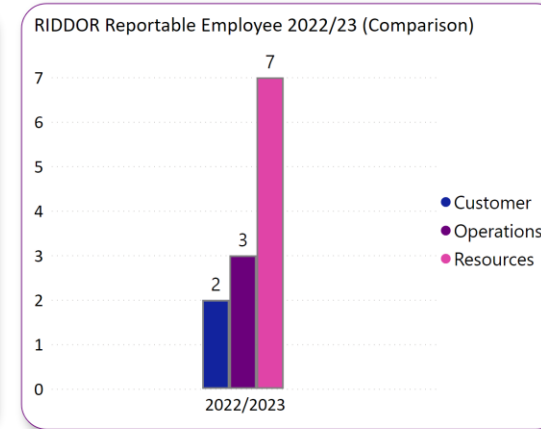
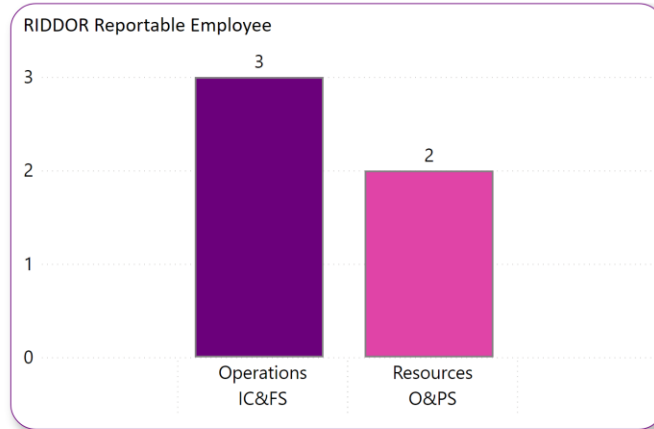
Staff Governance Health & Safety Report Quarter 3 2023/2024 (Oct 23 to Dec 23)

DISCLAIMER

The content of this Staff Governance H&S Report is confidential and protected by copyright. The relevant Data Stewards supplied the data used in this report. The report shows the position as at the dates identified within the report. Data and/or visuals (charts) contained within this Staff Governance H&S Report must not be copied, shared electronically or in hard copy, published or reproduced without the prior written consent of the Analytics & Insight Team (contact Claudine Mackie at claudinm@aberdeencity.gov.uk). If you find any errors or omissions please report this to the Analytics & Insight Team at the aforementioned email address.

Reported H&S Incidents (Employee) Between Oct to Dec 2023

The following tables give breakdown of all employee incidents across all Functions and Clusters in Aberdeen City Council. The tables on the left initially show the number of incidents for each Cluster this reporting period with those tables on the right giving a quarter 3 comparison for each Function from 2020/21 to 2022/23 where applicable.

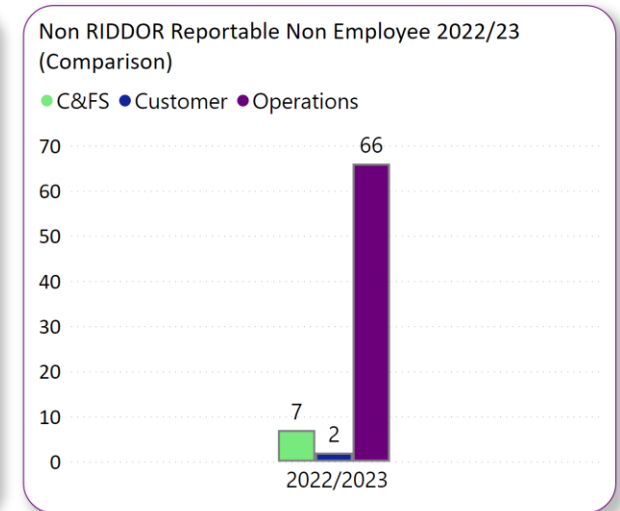
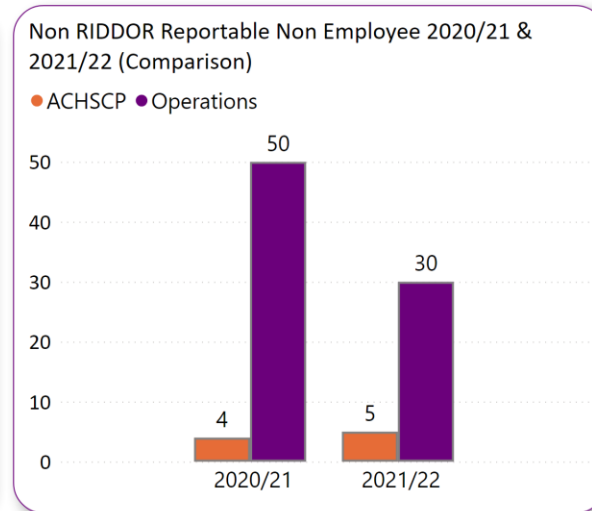
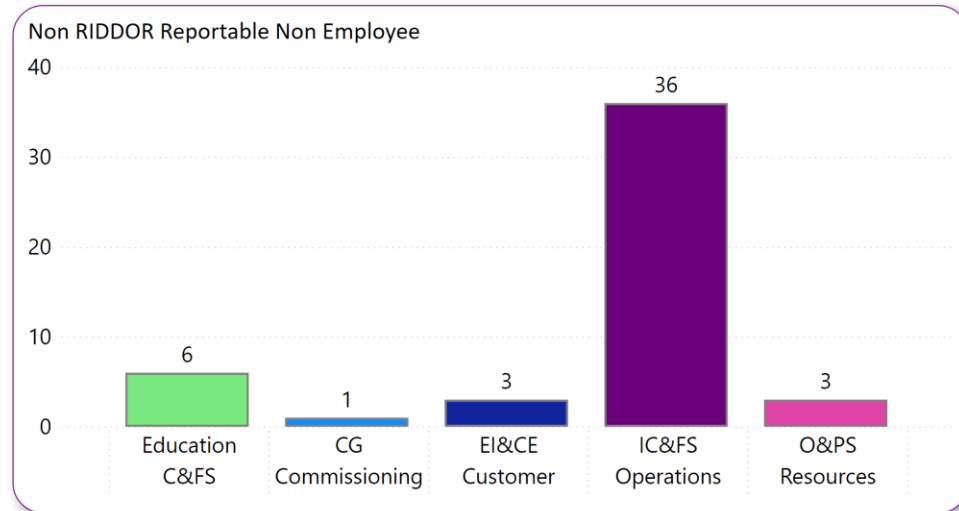
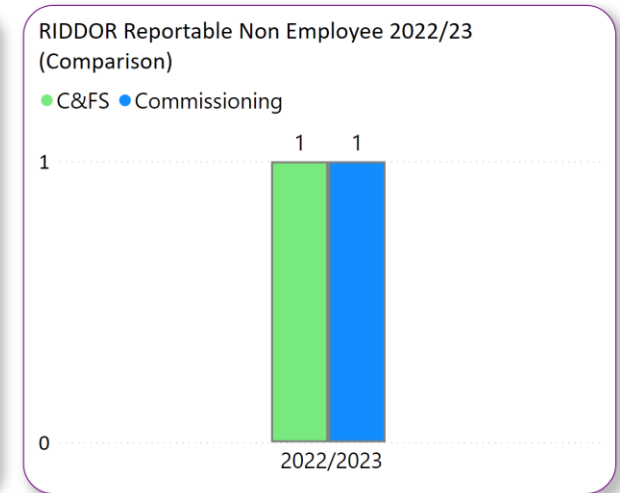
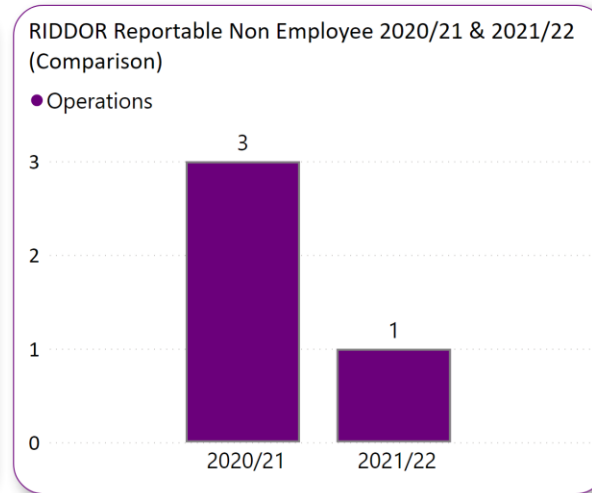
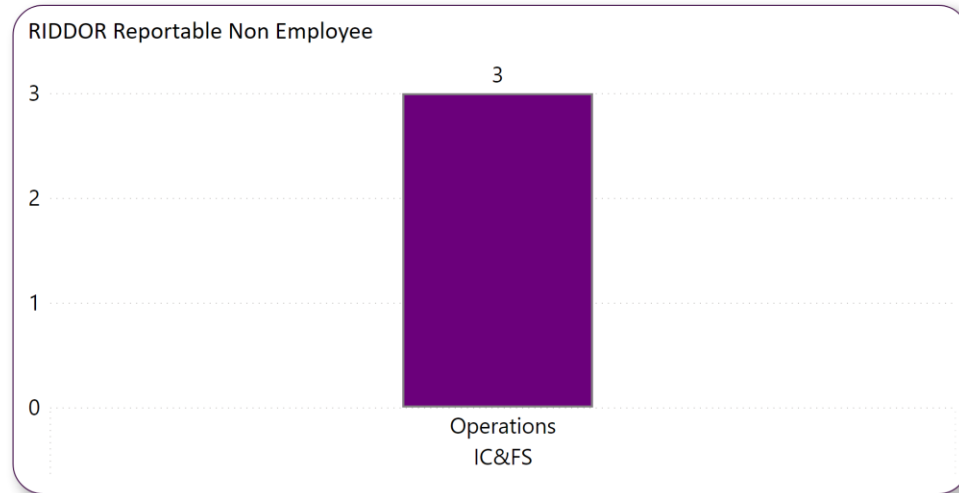


Employee Incident Information

RIDDOR reportable incidents compared to the corresponding quarter in 2022/23 are significantly reduced from 12 to 5. Non-RIDDOR reportable are nearly identical to the same period (286 to 285 this year) with the majority in IC & FS but the figures here have reduced from 255 to 240. Pages 4 and 5 show the causes of these incident reports with behavioural causes continuing to be the largest figure and the majority of these sitting within the nursery/primary schools. This may be the result of the staged intervention procedure schools follow and the H & S sub-group's work on this issue.

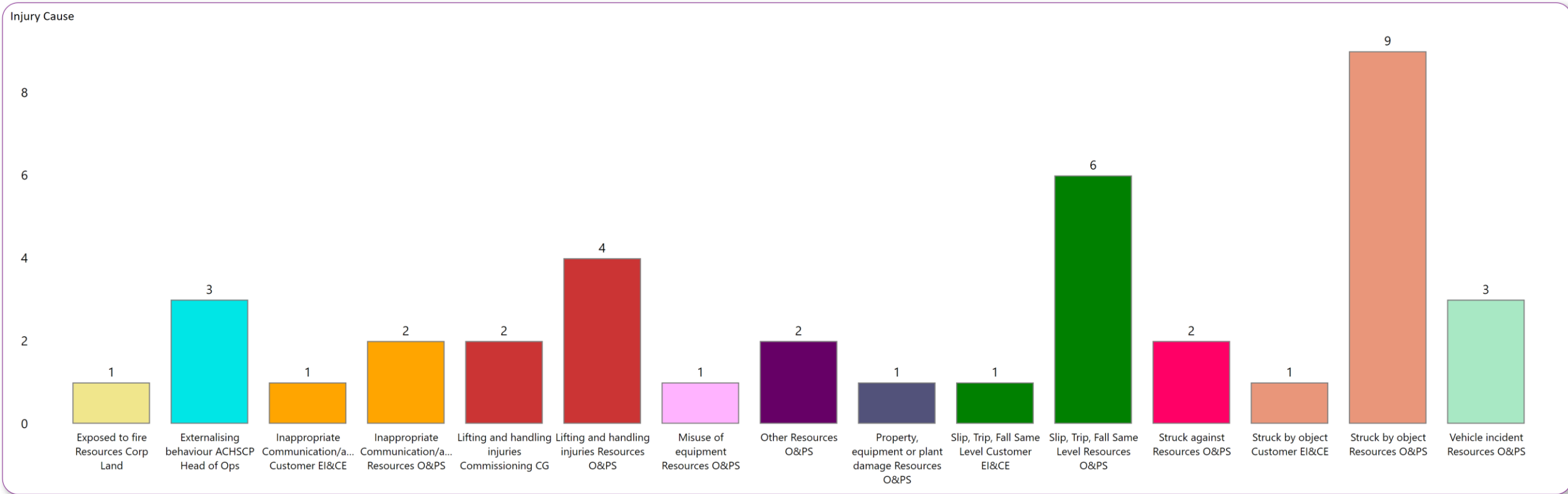
Reported H&S Incidents (Third Party) Between Oct to Dec 2023

The tables below give information on those non-employee incidents which happened across all Functions and Clusters. Again the tables on the left show the current period for each Cluster, with those tables on the right giving a quarter 3 comparison for each function from 2020/21 to 2022/23 where applicable.



H&S Incident Causation Reported between Oct to Dec 2023

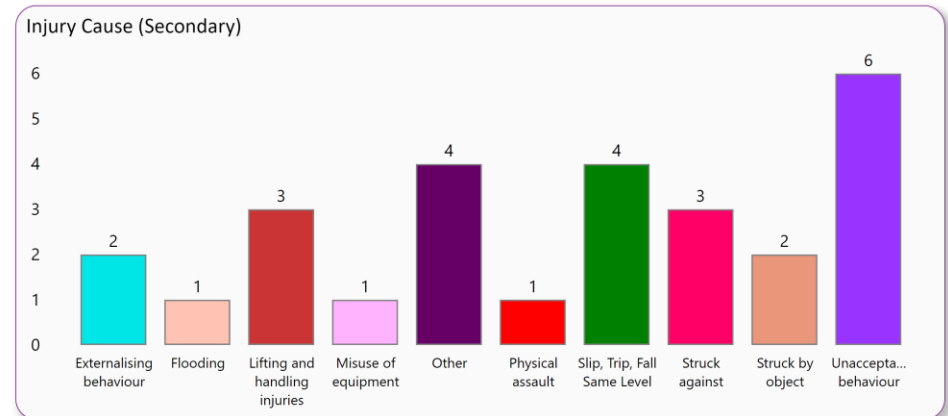
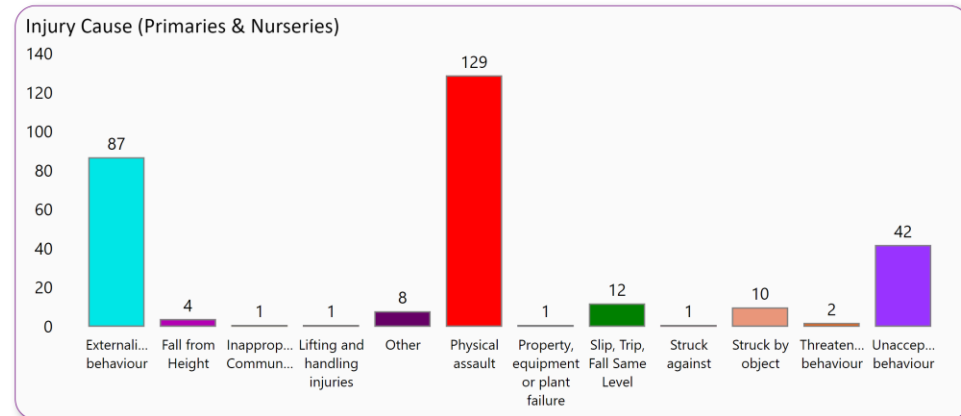
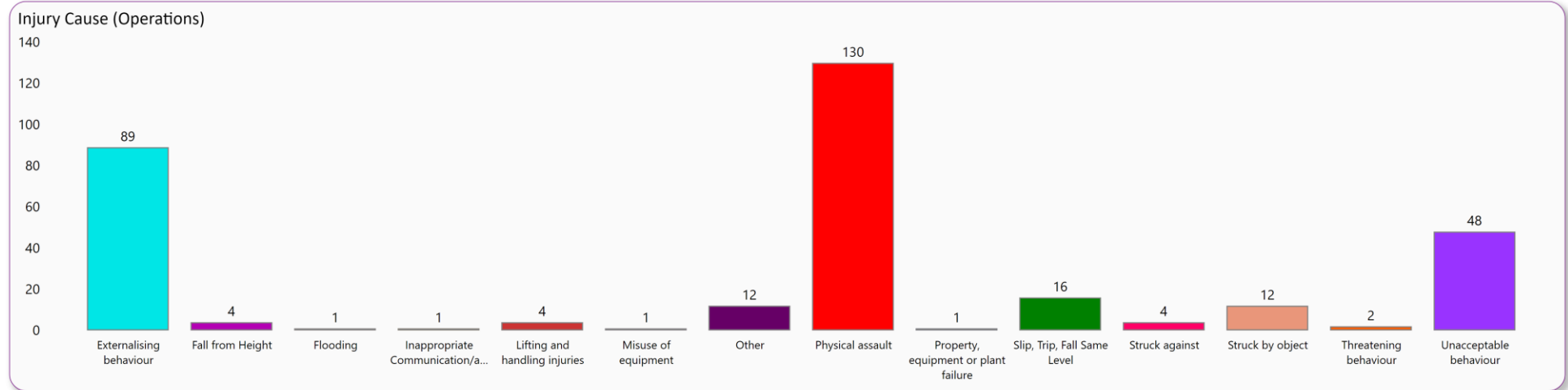
The table shows incident causation for each Cluster for this reporting period apart from Operations, which is covered in the next page.



Injury Cause											Total
Exposed to fire	Externalising behaviour	Inappropriate Communication/abuse	Lifting and handling injuries	Misuse of equipment	Other	Property, equipment or plant damage	Slip, Trip, Fall Same Level	Struck against	Struck by object	Vehicle incident	
1	3	3	6	1	2	1	7	2	10	3	39

Operations IC&FS reported H&S Incidents Between Oct to Dec 2023

The following tables give a breakdown of **Operations** Incidents.

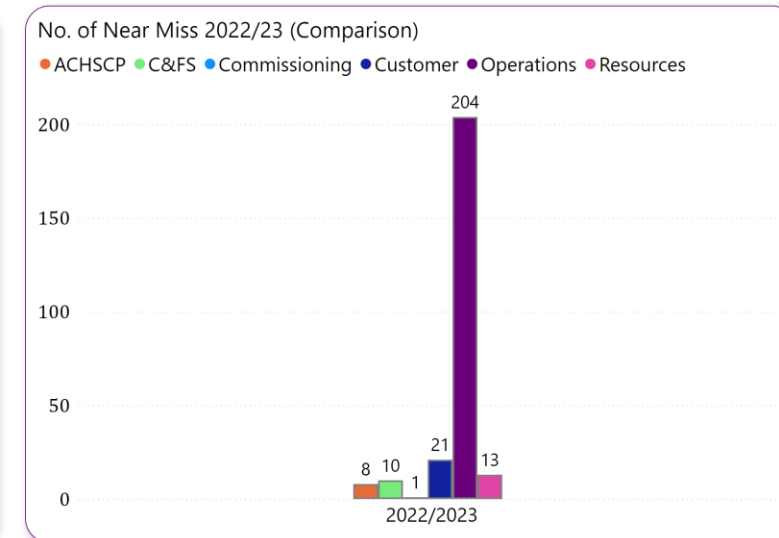
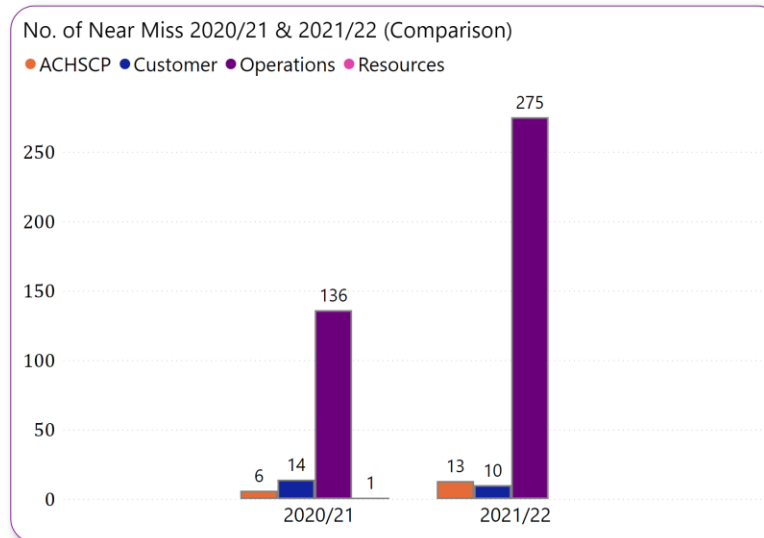


Injury Cause														
Externalising behaviour	Fall from Height	Flooding	Inappropriate Communication/abuse	Lifting and handling injuries	Misuse of equipment	Other	Physical assault	Property, equipment or plant failure	Slip, Trip, Fall Same Level	Struck against	Struck by object	Threatening behaviour	Unacceptable behaviour	Total
89	4	1	1	4	1	12	130	1	16	4	12	2	48	325

Reported H&S Near Miss Between Oct to Dec 2023

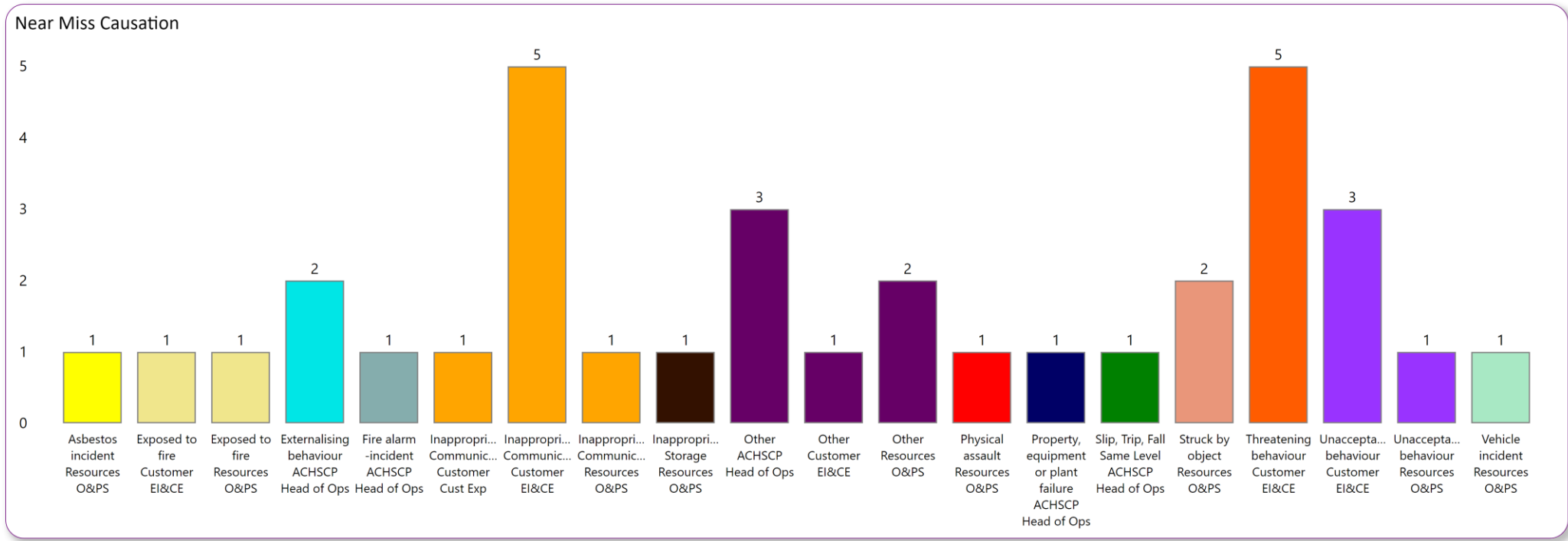
The tables below show information in relation to employee and non-employee Near Misses.

Top table: Total Near Misses for this reporting period for each Cluster. Bottom tables: quarter 3 comparison of Near Misses for each Function from 2020/21 to 2022/23.



Reported H&S Near Miss (Causation)
Between Oct to Dec 2023

The table below shows information to a Function and Cluster level for employee and non-employee Near Misses apart from Operations, which is covered in the next page.



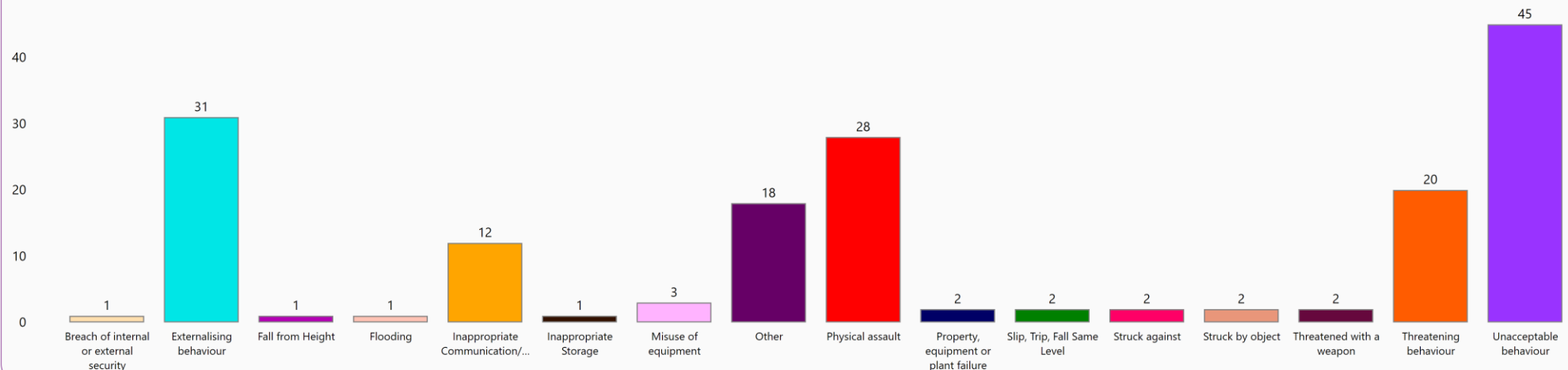
Near Miss Cause														
Asbestos incident	Exposed to fire	Externalising behaviour	Fire alarm - incident	Inappropriate Communication/abuse	Inappropriate Storage	Other	Physical assault	Property, equipment or plant failure	Slip, Trip, Fall Same Level	Struck by object	Threatening behaviour	Unacceptable behaviour	Vehicle incident	Total
1	2	2	1	7	1	6	1	1	1	2	5	4	1	35

Near Miss
Near miss figures have reduced from 257 to 212 in the corresponding period with IC & FS still remaining the highest but showing a reduction from 204 to 158. Causes are still in the majority around behaviours with a similar narrative to incidents in location.

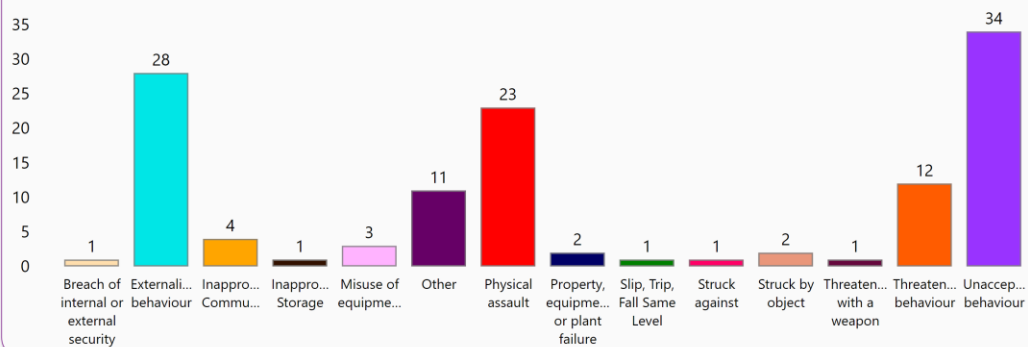
Operations IC&FS Reported H&S Near Miss Between Oct to Dec 2023

The following tables give a breakdown of **Operations** Near Miss.

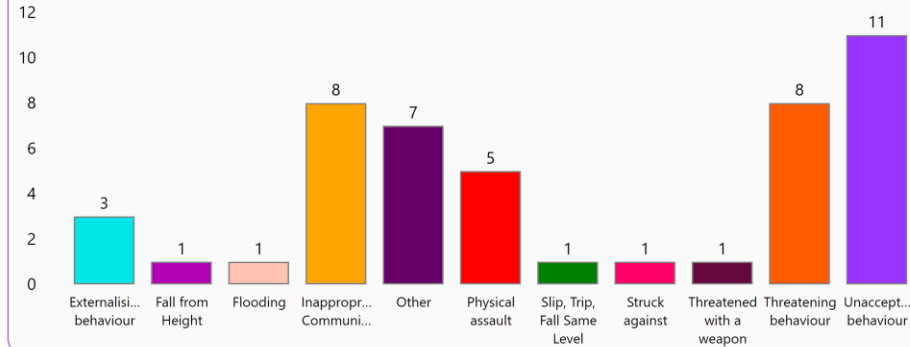
Near Miss Cause (Operations)



Near Miss Cause (Primaries & Nurseries)



Near Miss Cause (Secondary)



Near Miss Cause

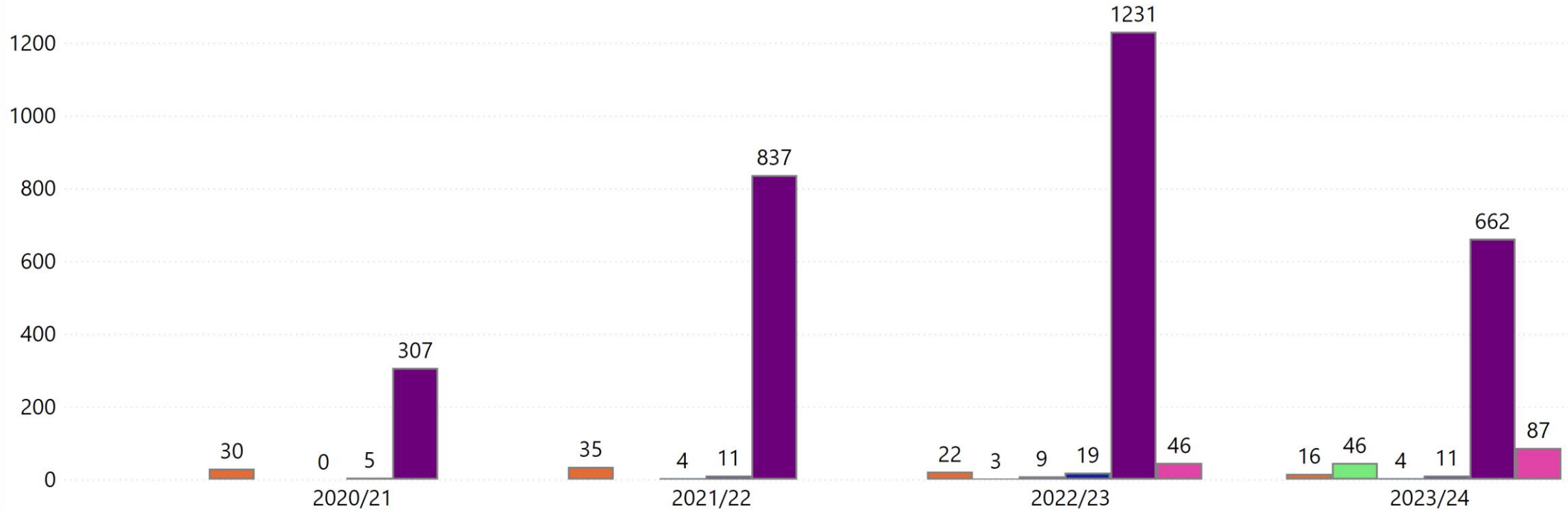
Breach of internal or external security	Externalising behaviour	Fall from Height	Flooding	Inappropriate Communication/abuse	Inappropriate Storage	Misuse of equipment	Other	Physical assault	Property, equipment or plant failure	Slip, Trip, Fall Same Level	Struck against	Struck by object	Threatened with a weapon	Threatening behaviour	Unacceptable behaviour	Total
1	31	1	1	12	1	3	18	28	2	2	2	2	2	20	45	171

Reported Incidents From 2020/21 to 2023/24

The table provides information on the **total number** of incidents for the last four reporting years (including current year to date) to Function level.

No. of Reported Incidents

● ACHSCP ● Children's & Family Services ● Commissioning ● Customer ● Operations ● Resources



Reported Near Miss From 2020/21 to 2023/24

The table provides information on the **total number** of near miss for the last four reporting years (including current year to date) to Function level.

No. of Reported Near Miss

● ACHSCP
 ● Children's & Family Services
 ● Commissioning
 ● Customer
 ● Operations
 ● Resources

